



# League Letter Issue Two 2009

Mid-South District LWML Newsletter – Lutheran Women In Mission

## Yes, God Reigns

WOW!! What an honor to represent Mid-South District LWML at the 2009 LWML Convention as your president. The delegation from Mid-South was great!! The banner designed and made by **Lyla Kreig** was just beautiful and received many ohs and ahs. I will be the keeper of the banner until after the 2010 convention, it will be shown at the August Board of Directors meeting and at the 2010 Mid-South District Convention for all to enjoy. After the Convention, it was returned to **Lyla** as a keepsake as per her request.



### ***In The Word***

Honoring a daily appointment with the Father and His Word

### ***Of The Word***

Made over by the Holy Spirit, forgiven and restored

### ***Walking with the Lord***

Totally confident of Christ's presence in serving and living

Make these words your personal commitment by adding "I am" in front of each phrase. (Vision statement **Janice M. Wendorf** LWML President 2007-2011)

I pray these words will be a support for each of you in the days ahead.

[www.lwml.org](http://www.lwml.org). The magic letters to find out what is going on in the LWML. The convention pictures, offering amounts, details are all right at your finger tips. If you are not a computer person, ask someone to print out information for you. Electronic technology is growing in our LWML as well. Take advantage of it.

With the Portland Convention 2009 behind us, we turn our energy to 2010 and the Mid-South District Convention in Hot Springs National Park, AR **June 4 – 6, 2010**.

This fall we have an opportunity to fellowship, worship, and study God's Word with three area RETREATS. Check the website for information on each one at [www.midsouthlwml.org](http://www.midsouthlwml.org)

*God bless and keep each one of you, dear sisters in Christ.*

*Henrietta Gordon*

*President, Mid-South District LWML*

# ***A MISSION TRIP CHALLENGE***

President **Jan Wendorf** has challenged the women in LWML to participate in mission trips. Quite a few women in our district have taken such trips and have found them very rewarding. In July of this year, **Frauke Darnell** from Concordia in Kingsport, TN traveled to Latvia to participate in a Vacation Bible School Mission trip. She went with MOST Ministries (Mission Opportunity Short Term), an organization affiliated with our Lutheran Church Missouri Synod based in Ann Arbor, Michigan. For information about this organization you can write them at P.O. Box 130678, Ann Arbor, Michigan 48113 or go to [www.mostministries.org](http://www.mostministries.org).

The Mid-South District of our Missouri Synod Lutheran Church also sponsors mission trips on a regular basis. You can contact them at 1675 Wynne Road, Cordova, TN 38016 or go to [www.mid-southlcms.org](http://www.mid-southlcms.org).

*Ladell McWhirter*  
*Leader Development Chairman*

# ***A Little Bit of Africa***

"A Little Bit of Africa" came to Ascension/Madison, TN LWML at their February meeting. Our program included Bertha Sauer telling us and showing photos of her two African adventures: one to Zimbabwe and another to Ghana. **Mady Guthrie** reviewed the book, "Dreams Dawn in Africa." Each person was given a map of Africa, and with a little research we were happy to see that over the last four years \$593,911 of our Mites had been distributed to a variety of African Missions.

We were most fortunate to have **Abdelseed Murran**, his wife, **Alizabeth**, and his daughter, Afgar, visit us. Abdulseed related his story and answered our questions. He and his family are from the Nuba Mountain regions of Sudan. They were displaced from their home when the 20 year war between North and South Sudan reached their region. They fled to Khartoum, Sudan and then later to Egypt. After a few years in Egypt, the World Relief Organization sent them to a place then unbeknownst to them, Nashville, TN.

We ended with "A Little Taste of Africa" by serving some typical Sudanese foods in addition to our standby American deserts.

# ***Spiritual Disciplines***

Are you going to the Christian Life retreat? When Pastor Chuck led the board of directors in a study on spiritual disciplines it reminded me of a book I had read a few years, actually several years back. It is "Discipline, the Glad Surrender," by Elisabeth Elliot. It was and still is a very inspiring book. So much so I used it as the basis for a mini retreat I led this past April. We focused on the discipline of our body, time, possessions and work. Remember that everything we have is a gift from God. He created us, redeemed us, and blesses us so that we will be a blessing to others and to God, Himself. Then, hopefully, others will see Jesus in us.

*God's peace & joy!*  
*Sandie Harjala*  
*2nd Vice President*

# ***Christian Life Retreats***

In the past years, the Christian Life Committee has offered two retreats in the year between district conventions. This fall there will be three retreats: **Middle Arkansas, West Tennessee** and **East Tennessee**. Each retreat will begin at 4:00 pm on Friday and will end at 4:00 pm on Saturday. This new schedule allows attendees to travel home in time to fulfill commitments in local congregations on Sunday.

## ***Spiritual Disciplines***

The theme of all three retreats is "Spiritual Disciplines". Studies relating to this theme will be led by District Counselors. We are all aware of disciplines that are followed to promote physical fitness, i.e. healthy eating, exercise, adequate sleep. Of more importance, there are also disciplines that are connected with God's Word, spiritual fitness or well being. Maybe the question should be, "HOW IS YOUR SPIRITUAL FITNESS"?

### ***Middle Arkansas***

**Place:** Ferncliff Camp and Conference Center  
1720 Ferncliff Rd., Little Rock, AR 72223

**Date:** September 11, 4:00 pm — September 12, 4:00 pm

**Cost:** \$65.00 includes Friday night lodging, three meals

### ***West Tennessee***

**Place:** Pin Oak Lodge  
567 Pin Oak Lane Wildersville, TN 38388  
**Natchez Trace State Park** lays 35 miles east of Jackson on I-40 between Nashville and Memphis. Take exit 116 to park main entrance.

**Dates:** September 25, 4:00 pm — September 26, 4:00 pm

**Cost:** \$65.00 includes Friday night lodging, two meals (Breakfast is not included. You may bring your own breakfast to enjoy in your room, on the patio or enjoy the Breakfast Buffet in the lodge dining room for \$10.79).

### ***East Tennessee***

**Place:** Sunnybrook Farm (Smoky Mountain Retreat)  
313 Prospect Rd., Walland, TN

**Dates:** October 2, 4:00 pm — October 3, 4:00 pm

**Cost:** \$65.00 includes Friday night lodging, three meals

Mark your calendar now and plan to attend one of the retreats. Bring a friend to share, feast, be quiet and learn training in Spiritual Disciplines. "My soul will be satisfied as with the richest foods, with singing lips my mouth will praise you." Palms. 63:5

For more information contact **Nancy Shewmaker** [webshews@sbcglobal.net](mailto:webshews@sbcglobal.net) or **Carolyn Weeks** [bcweeks42@msn.com](mailto:bcweeks42@msn.com)

# LWML Sunday

## LWML Sunday Materials Available to Download On-line

October is traditionally the month when churches across the country celebrate the work of the Lutheran Women's Missionary League. Orders for LWML Sunday materials are still being received at the LWML Office for shipment.

The LWML Web site, [www.lwml.org](http://www.lwml.org), now has several of the items that were included in the LWML Sunday packets available to download. These packets were sent to each LWML society several weeks ago. The order form may be downloaded, completed and sent to the LWML office by fax or mail, or scanned to send by e-mail. Orders may also be placed by phone.

The on-line materials that are available for free download include the 2009 convention sermon crafted by Dr. Warren Schumacher, President of the Northwest District LCMS from 1994-2009, that has been adapted for use in the congregation. There is also a Power Point presentation for use with the sermon. With a click of the mouse the copyright information for the service may now be accessed.

Suggestions for ways to observe LWML Sunday, the banner design, and the children's message are available also for free downloading. Items to enhance the celebration are listed on the order form as well. To ensure delivery for October events, orders should be received by 09/01/09.

The Lutheran Women's Missionary League (LWML) is the official women's auxiliary of The Lutheran Church—Missouri Synod. For over 65 years, the LWML has focused on affirming each woman's relationship with Christ, encouraging and equipping women to live out their Christian lives in active mission ministries and to support global missions.

## Serving Each Other

For the Son of man also came not to be served but to serve, and to give His life as a ransom for many. Mark 10:45

Here are a few more suggestions on how we can serve our fellow man:

1. Give a young mother a few hours off by baby sitting in the daytime.
2. Plants can be repotted and given away.
3. Make something special and give it away.
4. Visit your neighbors.
5. Share the love of the Savior in every possible way you care.



As [Charles R. Swindoll](#) writes in his book "[The Act of Unselfish Living](#)". "It is difficult to cultivate a servant's heart when you are trying to survive in a chaotic society dominated by selfish pursuit."

A Christian is a "little Christ". Christians have only just begun in the reaching out process and are never finished until Christ returns again.

*Clara Erickson*  
*Human Care*

# Mission Grants

I am rejoicing and you should be too! Our grant outstanding balance is **\$7,300: \$2,300** for Lutheran Camp Scholarships at Mt Petit Jean due March, 2010 and 2 payments of **\$2,500** for Mid-South District church workers. Together we have paid out **\$77,700** in just over a year. Our Lord continues to bless our work; and I am appreciative of your faithful and continued mite box giving. Your offerings are a fragrant gift to our Lord.

It isn't too early to begin planning your Mission Grant proposals. All the information is available on the Mid-South LWML web site. Included are guide lines, the grant proposal and important submission dates. If you do not have internet access, let me know and I will be happy to mail this information to you.

*In Christian Love,*

*Susan Jones*

*Chairman, Mission Grants and Advocacy*

## 2008 – 2010 LWML Mission Grants

**As of August 2009, this is the status of our LWML Mission Grants.**

PAID 5,000 (1/2)	District Professional Student Financial Aid	District
PAID 5,000	Mission Revitalization/Church Transformation	District
PAID 2,000	Baskets of hope, Little Rock Chapter	AR-Mid
PAID 10,000	Lutheran High School Scholarships	AR-Mid
PAID 1,000	Lutheran Braille Workers #178	AR-Northeast
PAID 3,500	Kitchen Renovation/VBS Outreach	AR-Northeast
PAID 1,000	Facility Improvements	AR-Northeast
PAID 4,000	Lighted Highway Sign	AR-River Valley
PAID 2,000	Concordia Seminary, St Louis Food Bank	AR-South
PAID 8,000	Storefront Café into Worship Facility	TN-Chattanooga
PAID 2,000	Botswana-Kids for Christ	TN-Chattanooga
PAID 4,000	John & Carol Shaneyfelt Ministry LBT	TN-East
PAID 1,500	Young Adult/College Student Outreach	TN-Middle
PAID 2,500	Trinity/Hope Haiti School Feeding Program	TN-Middle
PAID 4,500	Smart Board/Teaching Technology	West-TN
PAID 1,200	Gospel Street Puppets	West-TN
PAID 10,000	Mission Trip to Asia	AR-Mid
PAID 5,000	Lutheran Braille Workers in AR	AR-Mid
PAID 2,300 (1/2)	Lutheran Camp Petit Jean	AR-Mid
PAID 3,000	Lutheran Blind Mission	AR-Mid

**TOTAL \$77,700**

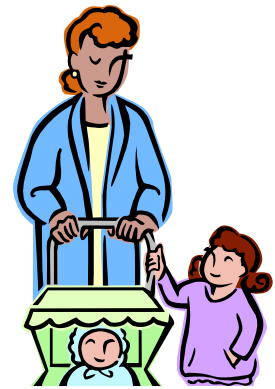
### Awaiting Funding

5,000	District Professional Student Financial Aid	District
2,300	Lutheran Camp Scholarships, Mt Petit Jean	AR-Mid

**TOTAL \$7,300**

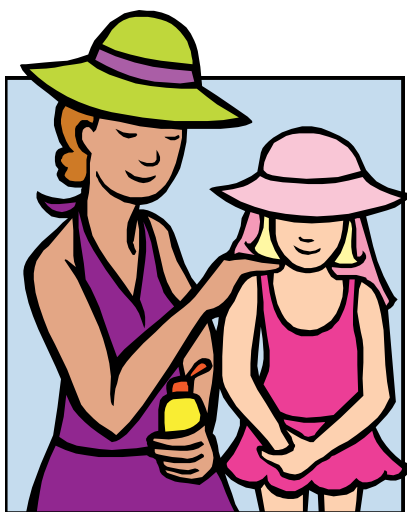
# ***Mothers and Daughters***

**MOTHERS** are their daughters a little grown up.  
**Daughters** are their **MOTHERS** that haven't caught up.  
They love and they fight but when they look back.  
Daughters will know that their **MAMA** was right.



The ways of the world will be learned slow.  
Taking the steps a little at a time.  
The rush of time will all too soon catch up.  
Then when they look back.  
Appreciation is the measure of the game

Daughters remember when **MOM** was there,  
**MOMS** remember she didn't seem to care  
She stayed aloof and rolled her eyes.

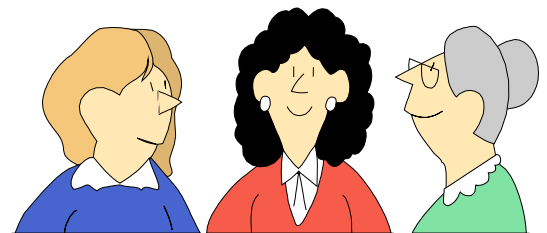


All suggestions were replied to with sighs.  
I got to be a fly on the wall  
At a gathering of daughters and **MOMS**.  
I heard the girls talk of how **MOM** was there

Her values and faith always strong  
How now looking back she knew she was wrong  
**MOM** was there for her all along  
Now day to day, with girls of their own

They find themselves being **MOM** too  
The rules they lay down, the clichés they recite  
They look in the mirror. Yea, **MOM** was right

It comes down from generation to generation  
Granma told **MOM** who said it to them  
Who'd ever think they would say it again  
To girls of their own who roll their eyes  
And reply to everything with sighs.



## ***Editor's Note***

As we continue to develop and change the way the newsletter is distributed and completed, I would like to incorporate more photos in the newsletter. Please feel free to submit photos with your articles.

Articles and photos can be submitted to Lisa Baker at [lbaker@knology.net](mailto:lbaker@knology.net) or [lbaker@cosma.com](mailto:lbaker@cosma.com).

***Next Deadline:  
11-15-2009***

# ***Submit Designs for LWML Convention Logo Now***

The Lutheran Women's Missionary League Executive Committee announces the theme and Scripture verses for the 2011 Convention to be held June 23-26, 2011 in Peoria, Illinois:

## ***Theme:***

***"Being with Jesus – Living on the Edge"***

## ***Scripture Verses:***

... They realized that they had been with Jesus ... "For we cannot but speak the things which we have seen and heard". Acts 4:13b & 20

## ***Goal Statement:***

Empowered by being with Jesus, I courageously speak of Him and live a life transformed by His love.

## ***Objectives – Convention attendees will:***

- Praise the Triune God
- Encounter Him in His Word
- Live boldly as His children

The LWML Executive Committee discussed many of the challenges that face Christians today in a world that often speaks unfavorably about Christianity. With the sure knowledge that each believer walks with Jesus daily, each person has the amazing opportunity to "live on the edge" in an unfriendly environment and to courageously reach out to share the extraordinary truth about the Redeemer of the world.

LWML President **Janice Wendorf** shared that the members of the Executive Committee are excited that the convention attendees will have the opportunity to experience personal spiritual growth through worship and study of the Word as they explore ways to fearlessly live on the edge with Christ Jesus by their side.

Proposed logo illustrations/graphics should be submitted in a landscape orientation as a TIFF or JPEG file. Design submissions must be received no later than October 1, 2009. Please send to:

**Eddie Norris**  
**LWML Public Relations Director**  
**3915 64<sup>th</sup> Ave Ct NW**  
**Gig Harbor, WA 98335**  
**edielwml@gmail.com**

# Calendar of Events

Date	Day of the Week	Event	Location
09-11-2009 09-12-2009	Friday & Saturday	Mid-South District Retreat	Ferncliff Camp, AR
09-19-2009	Saturday	Middle Tennessee Rally <b>Hide Me in the Shadow of Thy Wings</b>	Gallatin, TN.
09-25-2009 09-26-2009	Friday & Saturday	Mid-South District Retreat	Natchez Trace, TN
10-02-2009 10-03-2009	Friday & Saturday	Mid-South District Retreat	Sunnybrook Farms, TN
10-03-2009	Saturday	Mid-Arkansas Zone <b>Look to the Hills, God Reigns</b>	Malvern, AR
		South Arkansas Zone <b>Everyone Heard Them Speak in His Own Language.</b>	Forrest City, AR
		Arkansas Northeast Zone <b>Listen to His Voice</b>	Batesville, AR
10-10-2009	Saturday	Arkansas Northwest Zone Rally	Bella Vista AR
		Chattanooga Zone <b>Look to the Hills, God Reigns</b>	Chattanooga, TN
		Paducah Zone <b>God Loves, We Love</b>	Clarksville, TN
10-17-2009	Saturday	West Tennessee Zone <b>A New Song</b>	Collierville, TN
10-24-2009	Saturday	Arkansas River Valley Zone Rally <b>Jesus Imprint</b>	Fort Smith, AR
		East TN Zone Rally	Wartburg, TN
11-15-2009	Sunday	League Letter 3 Deadline	
06-04-2010 06-05-2010 06-06-2010	Friday, Saturday & Sunday	Mid-South District Convention <b>Eternal Life – Spring Fed</b>	Arlington Hotel Hot Springs, AR